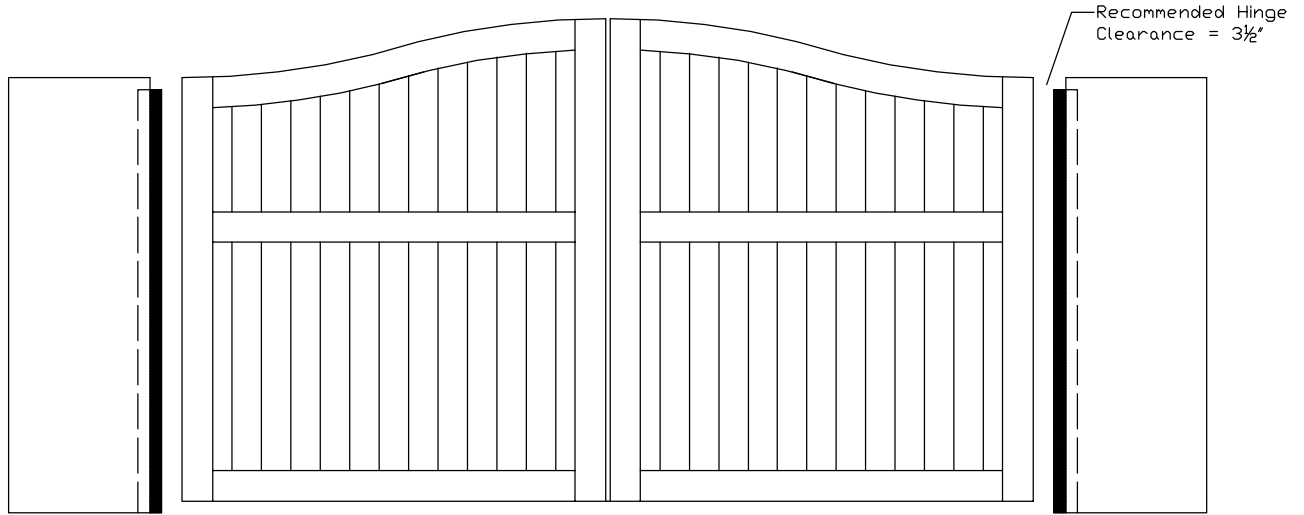
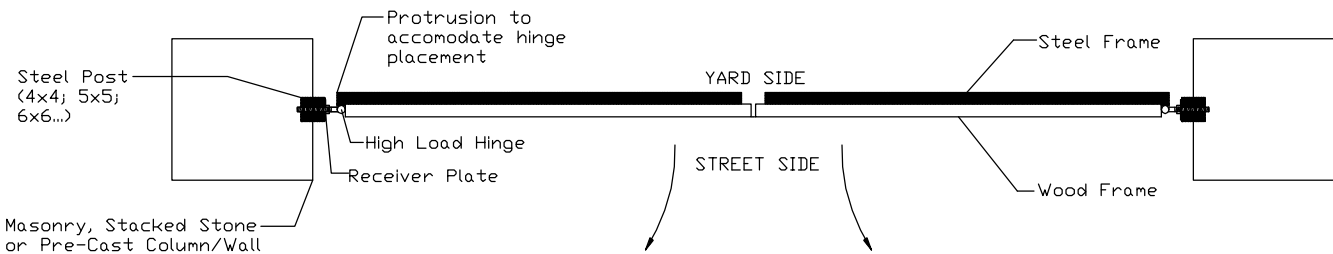
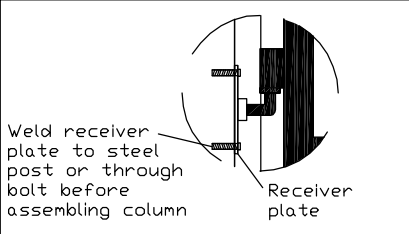
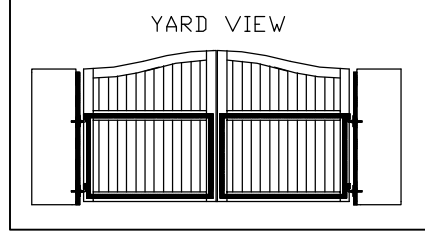


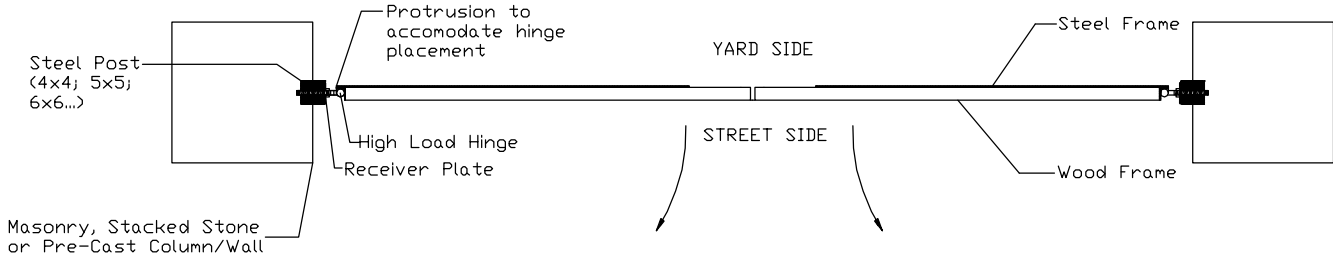
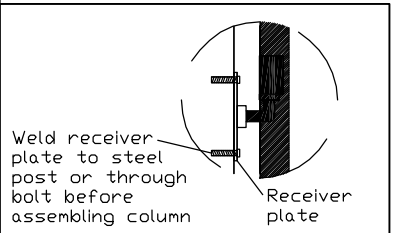
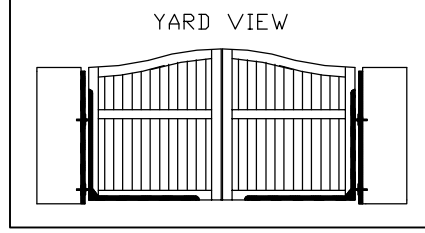
DRIVEWAY GATE WITH STEEL FRAME: ATTACHED TO STEEL POST EMBEDDED IN MASONRY WALL
(with Receiver Plates and High Load Hinges)



2x2 Tubular Steel Frame (over 14' double swing) Street Swing



2x2 Angle Iron "L" Frame (14' or less double swing) Street Swing



For illustration purposes only. Actual dimensions and materials would be detailed on customer approved documents