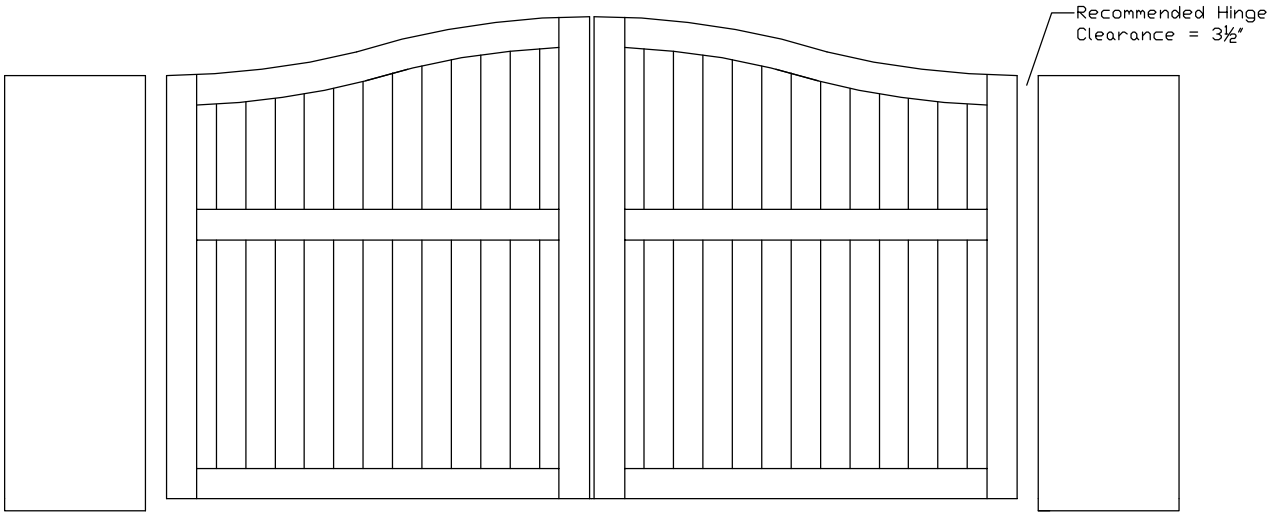
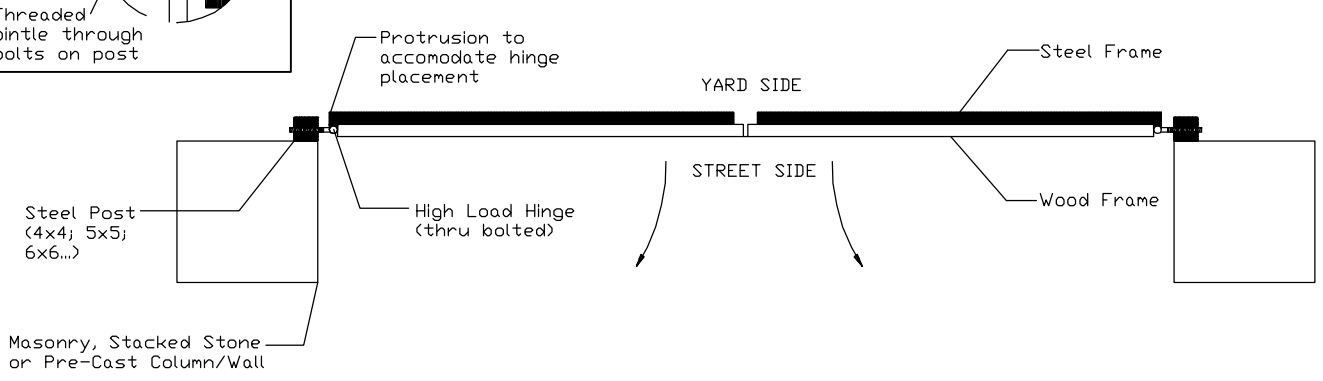
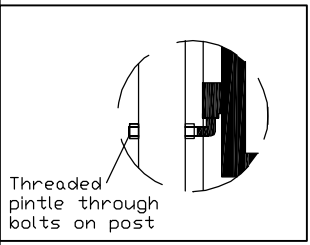
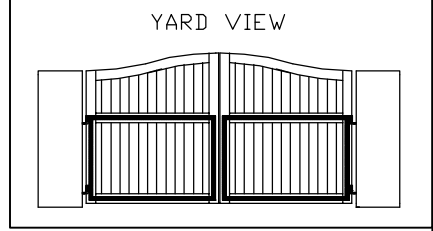


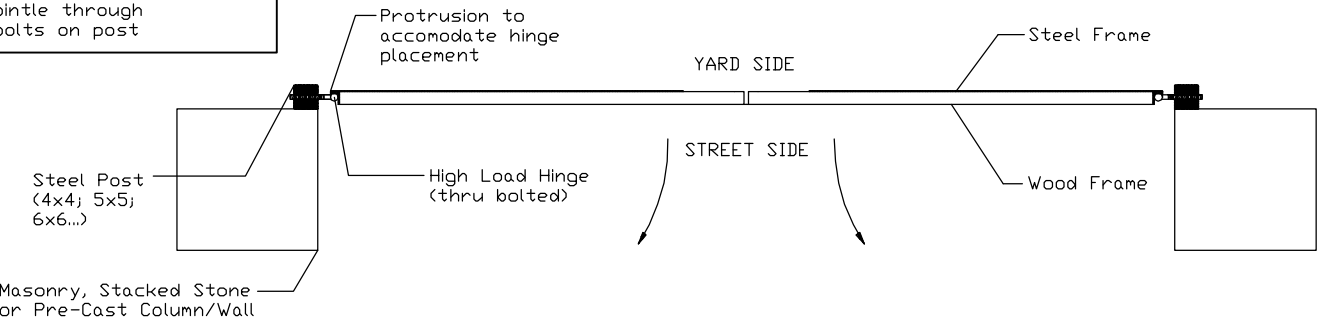
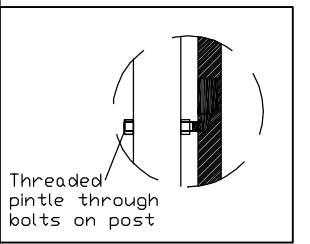
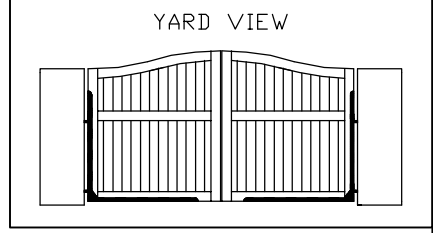
DRIVEWAY GATE WITH STEEL FRAME: ATTACHED TO STEEL POST SET BEHIND MASONRY WALL  
(with High Load Hinges)



2x2 Tubular Steel Frame (over 14' double swing): Street Swing



2x2 Angle Iron "L" Frame (14' or less double swing): Street Swing



For illustration purposes only. Actual dimensions and materials would be detailed on customer approved documents